

Getting Started with ConceptDraw PRO v11 for macOS

Contents

| | |
|---|----|
| GETTING STARTED WITH CONCEPTDRAW PRO | 3 |
| STARTUP DIALOG | 4 |
| ADDING SHAPES | 5 |
| SOLUTIONS and LIBRARIES | 5 |
| CLIPBOARD OPTIONS | 5 |
| FLOWCHART TOOLS | 6 |
| CONNECTING OBJECTS | 7 |
| WORKING WITH YOUR DRAWING | 8 |
| SMART OBJECTS | 11 |
| RAPID DRAW | 12 |
| MULTI-PAGE DRAWINGS | 13 |
| PRESENTING YOUR DRAWING | 14 |
| CUSTOM LIBRARIES | 15 |
| IMPORTING/EXPORTING | 15 |
| PRINTING YOUR DRAWING | 15 |
| SOLUTION PARK | 15 |
| VIDEO ROOM | 15 |
| SAMPLES | 15 |
| NO-CHARGE SUPPORT | 16 |
| CROSS-PLATFORM LICENSING | 16 |
| APPLE macOS SUPPORT | 16 |
| MULTI-DISPLAY SUPPORT | 16 |
| MULTI-LANGUAGE SPELL CHECK | 16 |
| ABOUT CS ODESSA | 16 |
| FREQUENTLY ASKED QUESTIONS | 17 |
| TABLE OF FIGURES SUPPORT | 18 |
| KEYBOARD SHORTCUTS | 19 |

GETTING STARTED WITH CONCEPTDRAW PRO

Thank you for your interest in ConceptDraw® PRO v11! To begin with, let's install the program on your system. To install the product, and activate your trial license:

1. Navigate your web browser to www.ConceptDraw.com and click **Sign In**.
2. Fill in the form with your information, and then click Submit.
3. Check your email for the message from support@ConceptDraw.com that contains your confirmation link. (Spam filters may catch this message. If you don't see the email within a few minutes, check your "Junk" or "Spam" folders.)
4. Follow the link to confirm your account, and then click **Download Product**.
5. Once the download is complete, run the installation file.
6. Follow all the on-screen instructions to complete the installation.
7. Once the installation is completed, ConceptDraw STORE runs automatically. The trial licenses listed in your account will be delivered to your computer automatically through your internet connection.
8. Congratulations! Your FREE 21-day trial of ConceptDraw PRO has begun.

STARTUP DIALOG

Startup Dialog appears after ConceptDraw PRO runs and also can be invoked at any time when you are using Conceptdraw PRO.

Startup Dialog offers you four options:

- **New** - Create new document from blank page
- **New document wizard** - Set properties on a new document
- **Open file** - Open an existing document
- **Browse Solutions** - Use a template or sample to create a new document

Startup Dialog can be opened from the File menu in the upper-left corner of the window. It offers options.

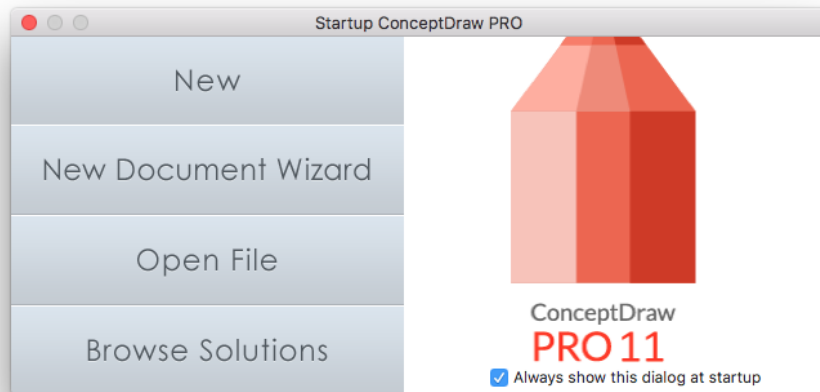


Figure 1: Startup Dialog

ADDING SHAPES

ConceptDraw PRO provides a complete range of business graphic documentation solutions with thousands of stencils and hundreds of templates for rapid diagramming. In addition to a wide assortment of basic shapes. Configurable drawing tools make it quick and easy to create professional diagrams that are clear and easily understood.

SOLUTIONS and LIBRARIES

Solutions panel provides direct access from the application to a content of any solution.

Stencil Library panel contains large preview images.

To add shapes to your drawing, select a library from the Solutions pane on the left side of the window.

Click a library's name to open it. Library objects will be displayed on the Library panel .

Then drag-and-drop objects from the library into your drawing.

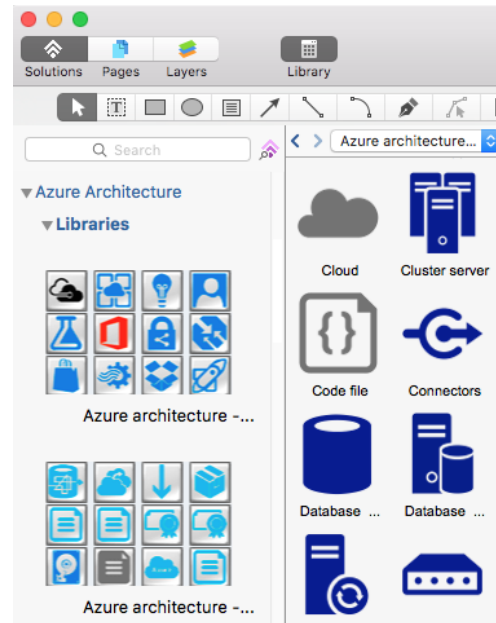


Figure 2: Solutions and Library Pane

CLIPBOARD OPTIONS

On your drawing, you can rearrange shapes by dragging-and-dropping, as well as cut, copy, and paste with standard keyboard shortcuts.

You can also use Duplicate (from the Edit menu, or Cmd+D) to create one exact duplicate of the selected object.

FLOWCHART TOOLS

ConceptDraw PRO comes with a set of Flowchart tools designed to simplify flowcharts creation. Flowcharts are diagrams that show the steps in a process. Basic flowcharts are easy to create and, because the shapes are simple and visual, they are easy to understand.

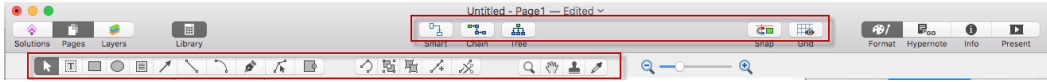


Figure 3: Flowchart tools

ConceptDraw PRO makes it easy to connect objects in your drawing. You can use one of the Connectors. To connect elements using this tool, drag the connector from one connect point to another.

The Clone tool is the easiest way to place multiple copies of a shape. Select a shape, and then activate Clone tool. With each click, you will place a copy of the selection. Press Esc on your keyboard to deactivate Clone tool when you're done.

The Chain and Tree connection modes allows you to automatically connect selected objects with Connectors in a chain or tree structure. The Snap tool helps to snap an object to neighboring objects.

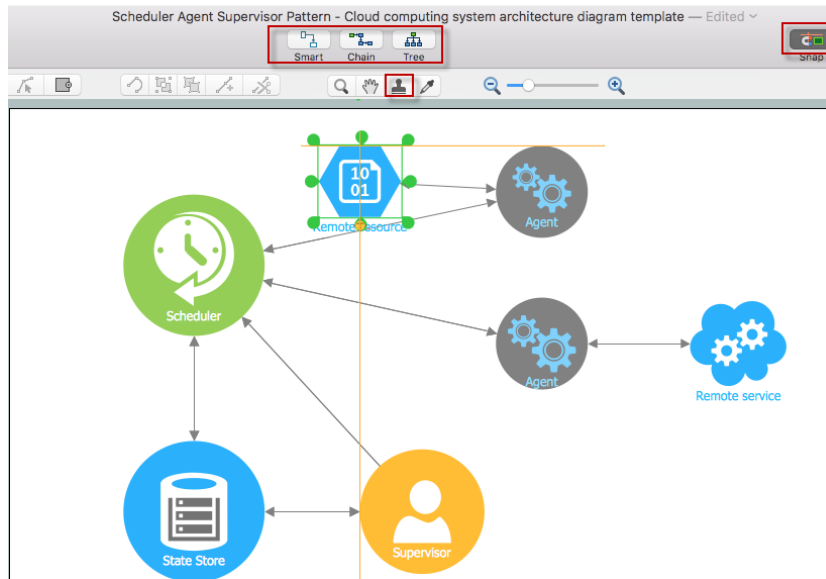


Figure 4: Adding Shapes

CONNECTING OBJECTS

You have two options for drawing connections between objects: Direct Connectors and Smart Connectors.

DIRECT CONNECTORS

Direct Connectors are straight lines from the point of origin to the point of contact. Select Direct Connector, click the point you wish to originate the connector from, and then drag your mouse to the desired end point and release the mouse button.

SMART CONNECTORS

Smart Connectors are drawn very similarly to Direct Connectors via click-and-drag. However, they will automatically route around objects already placed in your drawing.

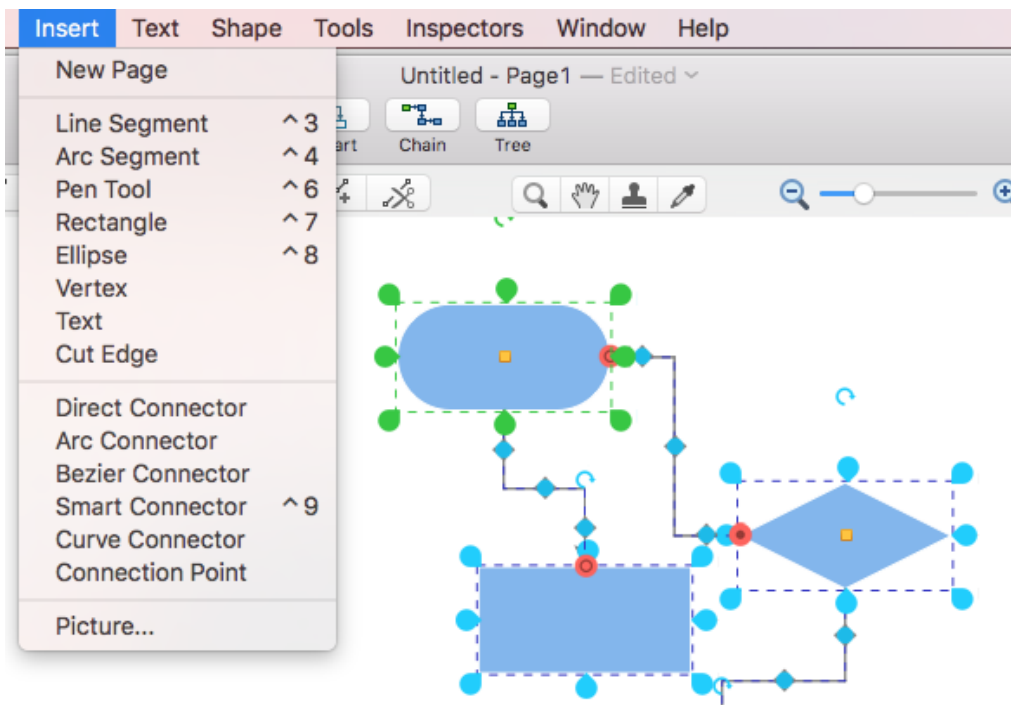



Figure 5: Connectors

WORKING WITH YOUR DRAWING

Once you have placed shapes into your drawing, you can edit them.

SHAPE STYLE

To change the style of a shape in your drawing, view the Inspectors by clicking

the button  on the toolbar. Expand the Fill palette to view a variety of colors, gradients and textures. Also on this palette are style options for Line, Shadow and Text.

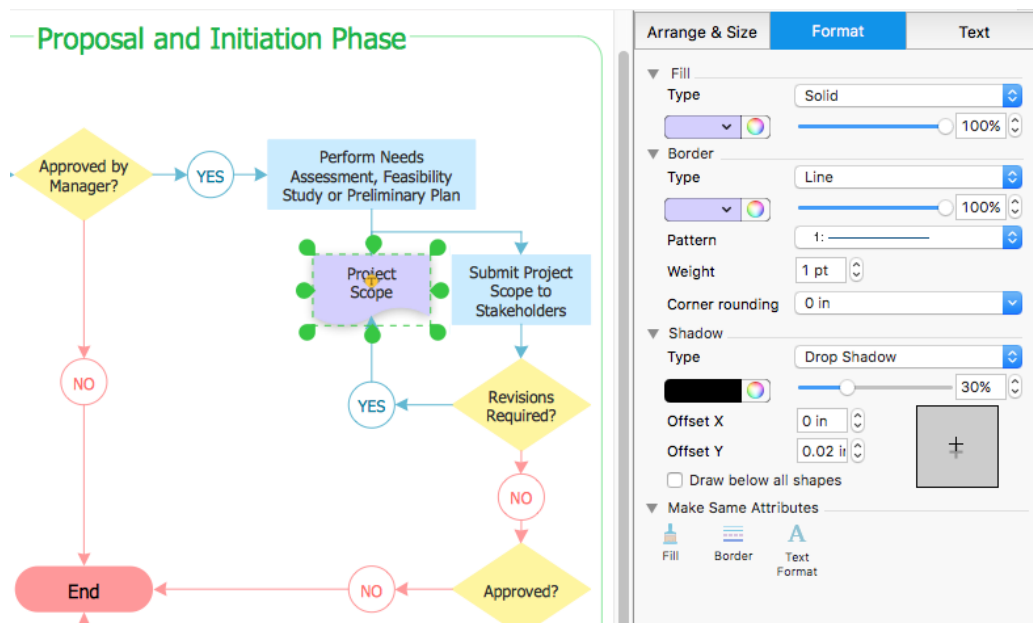


Figure 6: Shape Style Formatting

SHAPE TOOLS

You have even more options for working with shapes right on the toolbar. Rotate and Flip transform a selection geometrically. Align is used to align multiple shapes along a single axis. Distribute spaces shapes evenly on the page.

Front and Back place shapes on different layers of the drawing. Identical conforms the dimensions of the secondary selection (blue highlight) to those of the primary selection (green highlight). Click the buttons to select from the different parameters for the chosen operation.

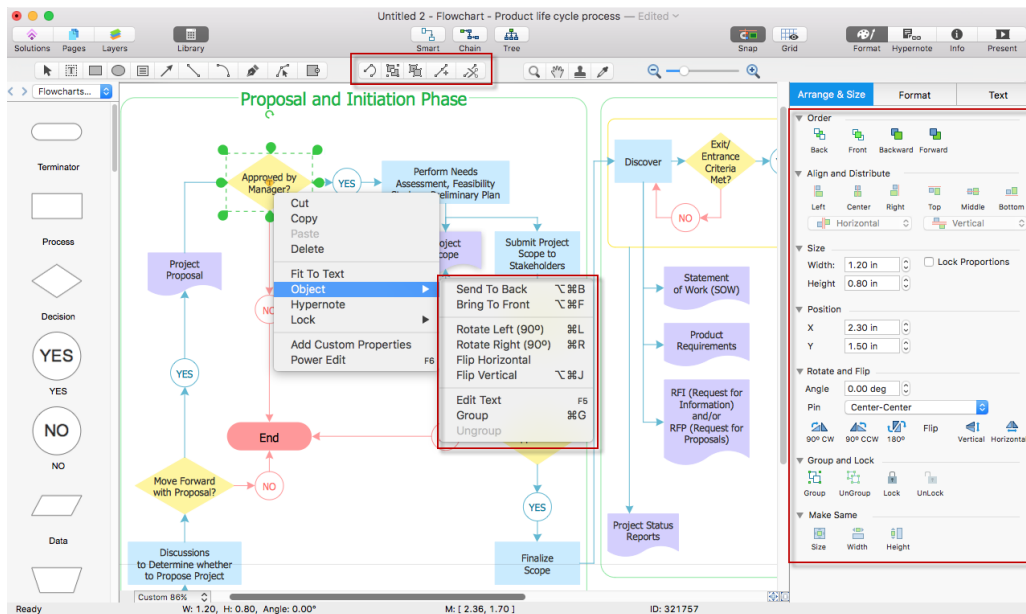


Figure 7: Shape Tools

You can Group shapes to make multiple shapes move as a single unit, yet retain their individual properties, by pressing **Cmd+G**, or selecting Group from the Shape menu. Use **Cmd+U** to ungroup. Also on the Shape menu is the Operations submenu. This contains Join, which makes multiple shapes into a single shape, and Separate, which reverses that operation.

HYPERLINKS AND NOTES

You can also add a note and hyperlinks to an object by selecting it, and then clicking Hypernote to open a window from which you can select the type and destination of your text note and multiple hyperlinks.

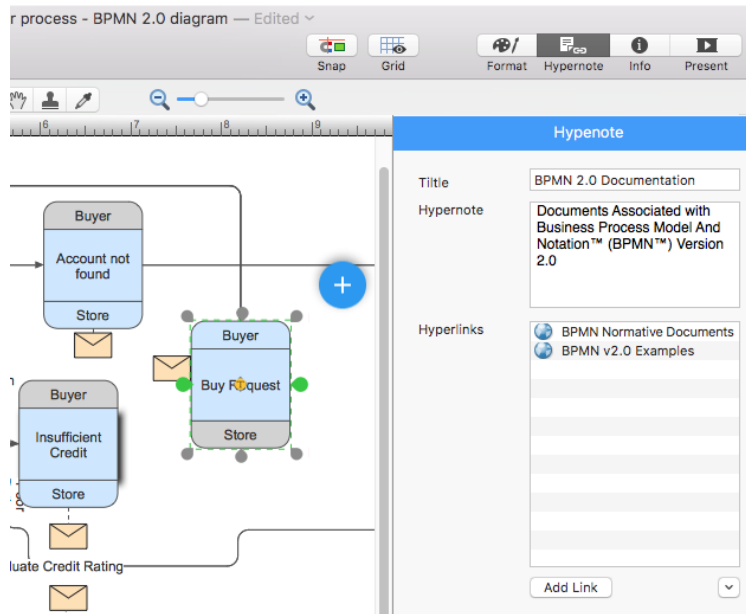


Figure 8: Adding Hyperlinks

GRID AND RULERS

You can fine tune the alignment of your drawing by configuring Grid & Rulers and Snap & Glue on the Tools menu.

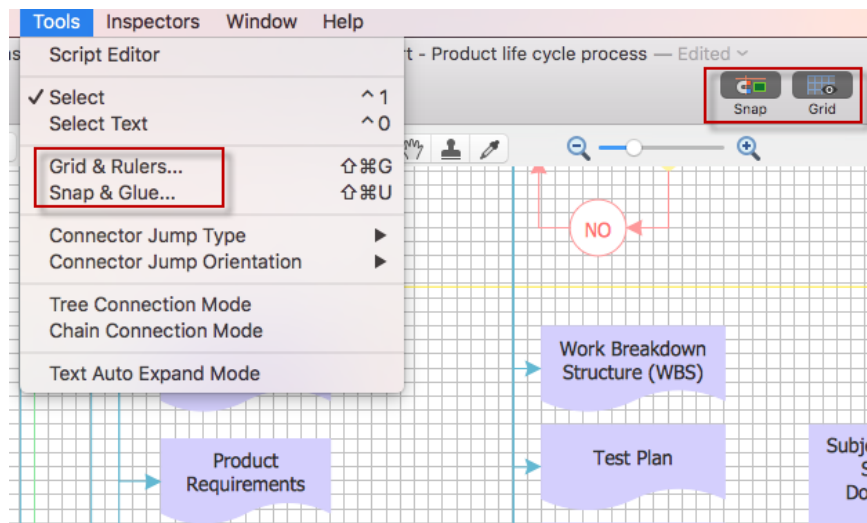


Figure 9: Tools Menu

SMART OBJECTS

Many of ConceptDraw PRO's libraries contain Smart Objects, identified by a blue tile in the library pane.

Smart Objects are shapes with unique properties that can be edited by clicking the Smart Object icon that appears when they are selected in a drawing.

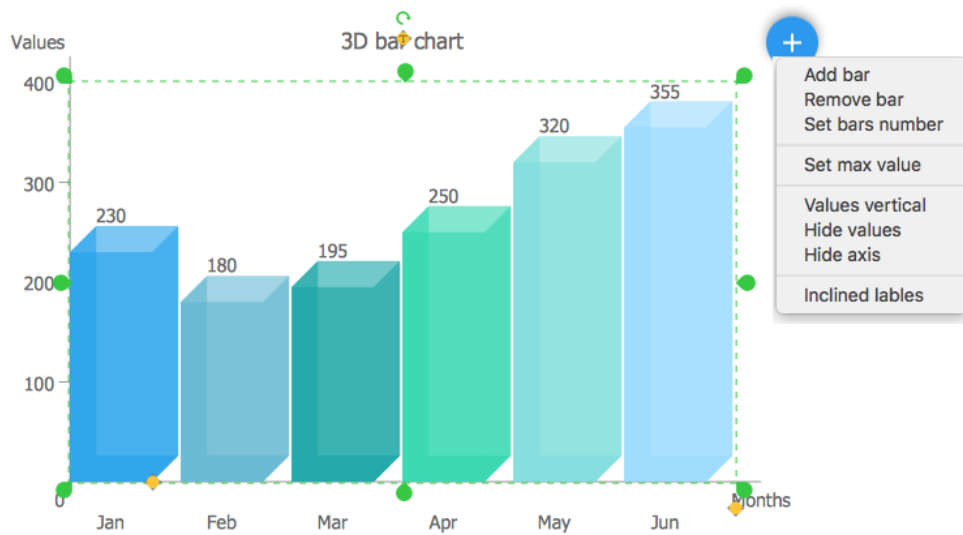


Figure 10: Smart object

RAPID DRAW

Rapid Draw mode is the fastest and easiest way to create a flowchart in ConceptDraw PRO.

Rapid Draw allows you to build professional flowchart quickly and easily. Engage Rapid Draw object from the Flowcharts Rapid Draw library and then hover your mouse over an object at a drawing page.

Click one of the small blue arrows that appear to draw a Smart Connector and Duplicate of the selection in the chosen direction. Using Rapid Draw objects you can easily create complex flowcharts in practically no time. You can adapt other objects for Rapid Draw flowcharting using the Rapid Draw button on the Shape tab.

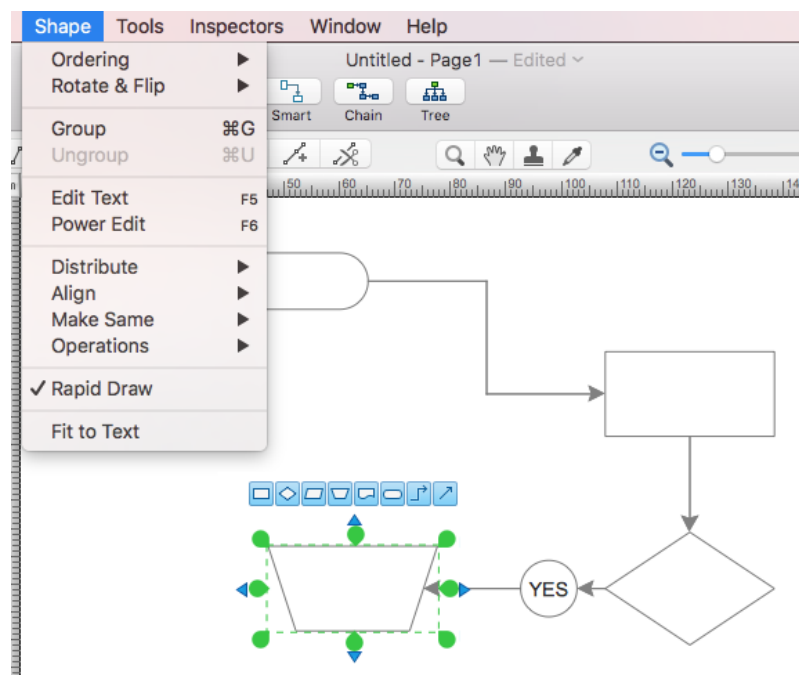


Figure 11: Quick Flowcharting with Rapid Draw

MULTI-PAGE DRAWINGS

ConceptDraw PRO supports multi-page documents.

To add more pages to your drawing, select **New Page** from the **Insert** menu. The small left and right arrows in the bottom-left corner of the window scroll through the pages of your drawing. Click the **Pages** icon next to the **Solutions** icon to open the **Page Navigator** tray.

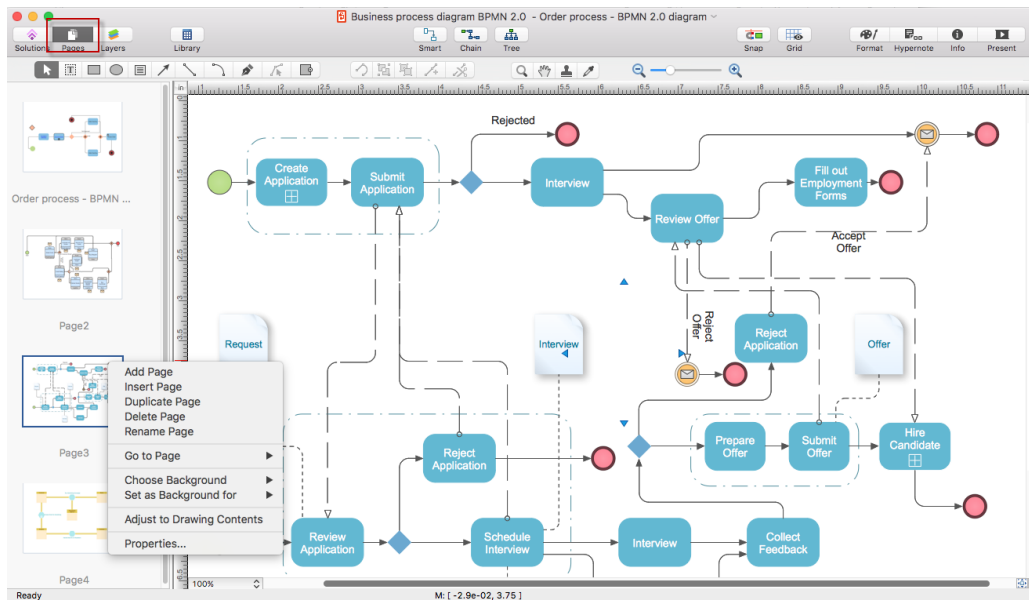



Figure 12: Pages Navigator

PRESENTING YOUR DRAWING

ConceptDraw PRO supports dynamic presentations. Any diagram or drawing you make in ConceptDraw PRO can be a dynamic presentation.

On the Present panel,  click Play button to view a full-screen slideshow of your drawing. Each page will be its own slide. Click the mouse to advance slides. If you prefer to export to MS PowerPoint for presenting, the same concept applies: each page will become its own slide.

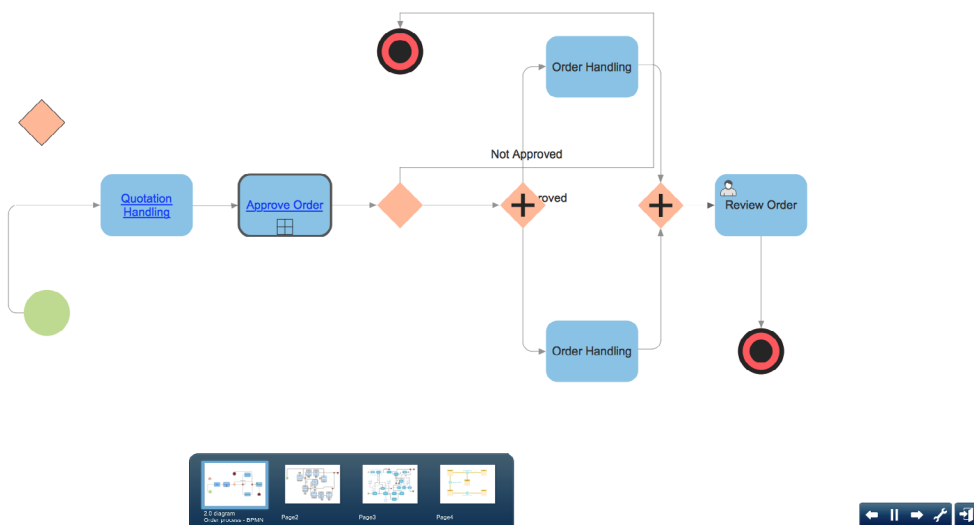


Figure 13 Presentation

CUSTOM LIBRARIES

From the File>Library menu you have numerous options for creating custom libraries, such as creating a new blank library into which you can drag-and-drop shapes from your drawing, saving the current library as a differently named file, and even sending the current active library via email.

IMPORTING/EXPORTING

Also from the File menu, you can view all of ConceptDraw PRO's import and export capabilities. Most notably, ConceptDraw PRO can import from and export to Microsoft® Visio's® vdx and vsdx file format, as well as MS PowerPoint® native files and a variety of other popular graphics file formats. ConceptDraw PRO can also export to Adobe PDF and SWF.

PRINTING YOUR DRAWING

From the File menu, select Print to open the Print Preview. From this view, you can configure the various print options to ensure your drawing looks as great on paper as it does on the screen. Click Print to send your drawing to the printer, or Close Print Preview to return to your drawing.

SOLUTION PARK

ConceptDraw Solution Park is an ever-growing collection of business-specific solutions and product add-ons that are available to add continued value after the initial purchase of a ConceptDraw product. For more information, visit <http://www.conceptdraw.com/solution-park/>

VIDEO ROOM

CS Odessa offers a series of instructional videos for ConceptDraw Products. Users of all proficiency levels will find here new insights into the product's functionality, as well as helpful tips to expedite their workflow. <http://www.conceptdraw.com/video/>

SAMPLES

CS Odessa offers an online collection of professional samples designed to help ConceptDraw users achieve their best. ConceptDraw Samples shows many of the varieties of tasks and possibilities that the ConceptDraw Product Line can achieve. <http://www.conceptdraw.com/samples/about-samples>

NO-CHARGE SUPPORT

CS Odessa offers no-charge support for all licensed and trial users of ConceptDraw Products. ConceptDraw Maintenance Assurance P3 is also available to stay current with major updates to ConceptDraw Products.

CROSS-PLATFORM LICENSING

CS Odessa is one of the only companies in the world that offers a cross-platform license. This means that if you want to install your product on a Mac and a PC for your use, you can do so with our license. Most companies require that you purchase a separate license for each platform.

APPLE macOS SUPPORT

All ConceptDraw applications are compatible with OS X 10.10 and later.

MULTI-DISPLAY SUPPORT

ConceptDraw PRO v11 supports working across multiple computer screens. This allows you to work on one screen and present on another.

MULTI-LANGUAGE SPELL CHECK

ConceptDraw PRO offers Spell Check in a variety of different languages.

ABOUT CS ODESSA

Founded in 1993, Computer Systems Odessa supplies cross-platform productivity tools and graphics technologies to professional and corporate users around the world.

From their headquarters in Odessa, Ukraine, and U.S. office in San Jose, CA, CS Odessa sells internationally in over 150 countries, both directly and through resellers.

The ConceptDraw Productivity Line has won numerous awards, and is used by hundreds of thousands all over the world. For more information, visit <http://www.conceptdraw.com>

FREQUENTLY ASKED QUESTIONS

What is the difference between Technical Support and Maintenance Assurance P3?

Technical support is a no charge item provided to our customers and individuals trialing or products. Our Tech Support team is there to help you with installing, product activation, and product issues. Technical support is available by submitting a ticket via our web site, and by phone and email. Minor product upgrades are at no additional cost.

When purchased at the same time of you ConceptDraw Product purchase, Maintenance Assurance P3 provides you the next major release of your product at no additional cost. When the next major upgrade of the product becomes available you will be notified of its availability for download and installation.

Why is ConceptDraw STORE part of the product I purchased?

When you activate a purchased license for your product, that authorization is stored in the cloud, and then synchronized with your desktop product(s) using ConceptDraw STORE. We do this so if the unthinkable occurs and you have a catastrophic event with your computer such as a hard disk failure, you can log into your account on ConceptDraw.com and retrieve your license, saving you time and headaches.

The ConceptDraw STORE also manages the versioning of all of your products, and give you access to all of the additional business solutions found in the ConceptDraw Solution Park.

I am with a large organization; do you support other methods of installation besides the one I experienced from my trial?

We have additional methods of delivering product to the users in your organization. Please contact our sales or support team for details.

Do you have pricing for academia and non-profits?

Yes, we have aggressive pricing for students, educators and employees of certified nonprofit organizations. Contact our sales team for pricing details.

TABLE OF FIGURES SUPPORT

| | |
|---|----|
| Figure 1: Startup Dialog | 4 |
| Figure 2: Solutions and Library Pane..... | 5 |
| Figure 3: Flowchart Tools | 6 |
| Figure 4: Adding Shapes | 6 |
| Figure 5: Connectors..... | 7 |
| Figure 6: Shape Style Formatting | 8 |
| Figure 7: Shape Tools | 9 |
| Figure 8: Adding Hyperlinks..... | 10 |
| Figure 9: Tools Menu..... | 10 |
| Figure 10: Smart Object | 11 |
| Figure 11: Quick flowcharting with Rapid Draw | 12 |
| Figure 12: Pages Navigator..... | 13 |
| Figure 13: Presentation | 14 |

KEYBOARD SHORTCUTS

Following is an abbreviated list of the most commonly used keyboard shortcuts. See the in-program Help file for the comprehensive list.

| Keystroke | Function |
|-----------------|---|
| Cmd + N | Create a new document |
| Cmd + Opt+ N | Create a new document from a template |
| Cmd + O | Open a document/template/workspace file |
| Cmd + S | Save the active document |
| Cmd + Shift + S | Save the active document under a new filename |
| Cmd + P | Print the active document |
| Cmd + Opt + G | Set Grid properties for the active document |
| Cmd + Opt+ U | Set Snap & Glue options for the active document |
| Cmd + A | Select all the shapes on page |
| Cmd + Z | Undo the last operation |
| Cmd + X | Cut the selection to the Clipboard |
| Cmd + C | Copy the selection to the Clipboard |
| Cmd + V | Paste |
| Cmd + Shift + N | Create a new library |
| Cmd + Shift + O | Open a library |
| Ctrl + 1 | Select tool |
| Ctrl + 2 | Text tool |
| Ctrl + 3 | Line tool |
| Ctrl + 4 | Sector tool |
| Ctrl + 5 | Arc tool |
| Ctrl + 6 | Spline tool |
| Ctrl + 7 | Rectangle tool |
| Ctrl + 8 | Ellipse tool |
| Ctrl + 9 | Connector tool |
| Ctrl + 0 | Eye Dropper tool |

CS Odessa

Technical Support/Sales Phone Numbers

US/Canada/Mexico:

Technical Support (Toll Free): +1 (877) 441-1150 x4
amersupport@csodessa.com

Sales (Toll Free): +1 (877) 441-1150 x3
amersales@csodessa.com

Europe:

Technical Support: +38 (048) 760-1963
+44 (203) 514-7040
support@conceptdraw.com

Sales: +38 (048) 760-1963
sales@conceptdraw.com