



## Tobias Baur

Student and founder of Maison Baur

# Revealing the Potential of Manufacturing Processes

### Industry:

Business Engineering with a focus on Supply Chain Management

### Location:

Switzerland, Aargau, Bottenwil

### Challenge:

Need an easy and comprehensive overview of an entire project, including reporting for status and costs.

### Toolkit:



### Solution:

Use ConceptDraw PROJECT and ConceptDraw PRO to conduct project planning, team management, reporting, and creating business graphics.

### Benefits:

ConceptDraw creates professional, accurate, and easy-to-manage project documentation, which helps to manage everyday project activities, improve team communication, and clearly represent project information with professional business graphics.

Tobias Baur is a student of the University of Applied Sciences, Northwestern Switzerland, majoring in Business Engineering with focus on Supply-Chain Management. Tobias has successfully combined his studies with the management of his own company, which produces outdoor furniture.

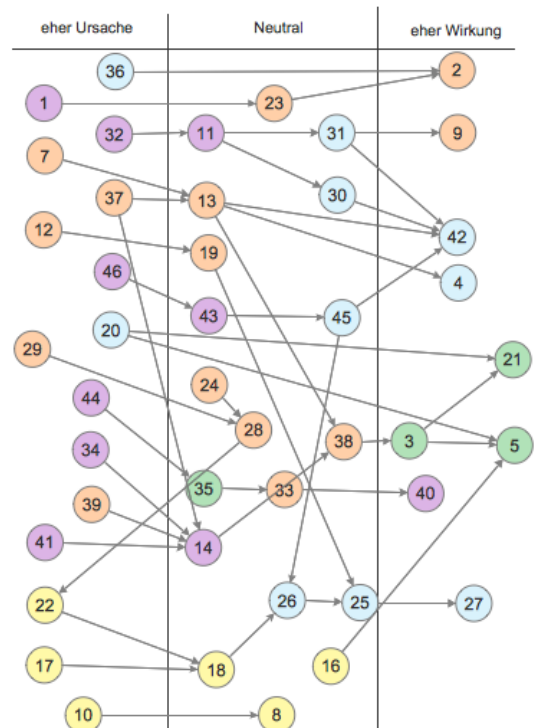
For his scientific student work, Tobias is required to organize projects as a project leader for up to 4 project members with detailed timelines, work schedules, and assignments for each person. He must also report the working hours and calculate the cost of the project.

Finally, he must create suitable project reports, to show progress to the stakeholders.

“One of the most important things when planning and executing my projects is an easy and good overview of the entire project. “

Project objective was to reveal unknown weaknesses and to optimize the potential in manufacturing processes.

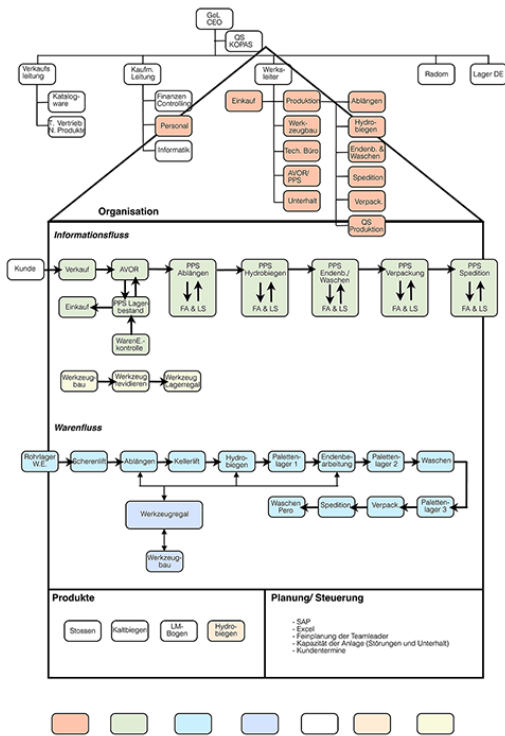
Two students from the University of Applied Sciences, Northwestern Switzerland analyzed the flow of goods and information over several months.



Tobias Baur is a committed user of Apple computers, so he used a Mac in his work. During his project development, Tobias tried a number of project management tools (OpenProject, Microsoft Project, etc.) After some experimentation, he selected ConceptDraw PROJECT for his project planning tasks.

“Cost isn’t the main issue for a company when it comes to buying software. I think the main point is that it works perfectly with whatever you already have and that the employees can use the potential of the software.”

One of the most important things when planning and executing projects is an easy and good overview of the entire project.



It’s essential to see exactly which team members have which tasks, how far they got with it, if there are delays in completion of the task, and what impact this has on the timeline. A constant report about the status and the costs is very important as well.

ConceptDraw PRO also meets project needs in business graphics. Tobias found that ConceptDraw PRO is “a super easy-to-use tool that produces professional finished products.” He adds “I like to use it for any kind of business-related graphics. Showing workflows, displaying supply chains, and so on.”

The first phase of the analysis was completed with interviews, intensive research, and a SWOT analysis. Selected problems that resulted from the first phase were then further analyzed in detail during the second phase. Brainstorming then enabled the project team to create innovative solutions to major problems.

“ConceptDraw PRO is “a super easy-to-use tool that produces professional finished products... I like to use it for any kind of business-related graphics. Showing workflows, displaying supply chains, and so on.”

Die Länge des „Balken“ ist ein Mass für die Länge der Bearbeitungszeit.

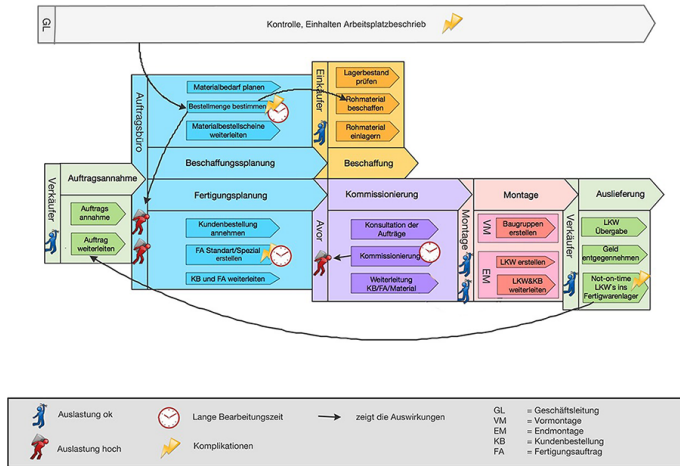
Der Fortschrittsgrad wird angezeigt. Dies könnte z.B wie folgend gelöst werden. Die geschätzte Bearbeitungszeit wird eingegeben, beim Bearbeitungsstart läuft automatisch die geschätzte Bearbeitungszeit ab und zeigt den Stand in Realtime auf den Displays.

Die Farbe rot zeigt an, dass der Auftrag nicht zum geplanten Liefertermin fertiggestellt werden kann.

Störungen, wie z.B Maschinenunterbrüche sollten auf dem Display angezeigt werden. Die Gründe für die Ausfallzeiten, sowie die geschätzte Verzögerung sind auf dem Computer ersichtlich.

“ConceptDraw PRO has definitely made my life much easier”, Tobias Baur said. “The biggest benefit for me is the professional collection of graphics and nice templates that give me ideas on how I could display my data”.

“It’s essential that I can see exactly which team members have which tasks, how far they got with it, if there are delays in completion of the task, and what impact this has on the timeline. ””

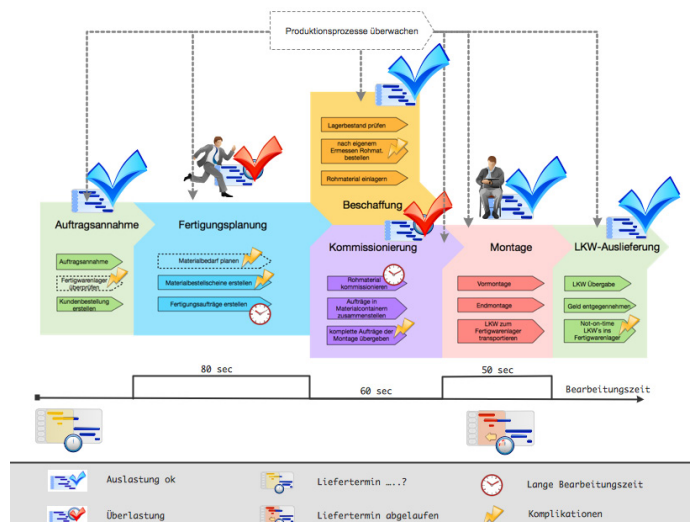


Through the analysis of manufacturing processes with the cooperation of the team leaders, responsible for each division of production, weaknesses were successfully identified and eliminated. The derived optimization potentials were identified and documented. Furthermore, inventive solutions for the main problems were created.

The implementation of the solution would have a big impact on the flow of goods and would create an overall fluent flow of goods that could be used to maintain the market position in the future.

“ConceptDraw PRO has definitely made my life much easier. The biggest benefit for me is the professional collection of graphics and nice templates that give me ideas on how I could display my data.”

As a conclusion, Tobias resumed: “Cost isn’t the main issue for a company when it comes to buying software. I think the main point is that it works perfectly with whatever you already have and that the employees can use the potential of the software. Because of that, they generate a higher value for the customer. ConceptDraw products deliver high quality tools that are easy to use.”





Corporate Headquarters  
CS Odessa, Ltd.  
29 Frantsuzskiy Blvd.  
Odessa, 65044, Ukraine  
Fax: +38 (048) 728-7013

Americas  
CS Odessa LLC  
1798 Technology Dr Ste 244  
San Jose, CA 95110-1399, USA  
Toll free (US/Canada): +1 (877) 441-1150  
Main Phone: +1 (408) 441-1150  
Fax: +1 (408) 441-1138  
Customer Support: +1 (877) 441-1150  
+1 (408) 694-3213