

Getting Started with ConceptDraw PROJECT v10 for Windows

Contents

GETTING STARTED WITH CONCEPTDRAW PROJECT	3
CREATING PROJECTS	4
ASSIGNING RESOURCES	5
SETTING THE CALENDAR	7
ADDING DETAILS	8
MILESTONE	8
HYPERNOTE	8
MANAGING MULTIPLE PROJECTS	9
PROJECT REPORTS	10
PRESENTING YOUR PROJECT	11
INTEGRATING WITH OTHER CONCEPTDRAW OFFICE APPLICATIONS	12
CONCEPTDRAW DIAGRAM	12
CONCEPTDRAW MINDMAP	13
WORKING WITH OTHER APPLICATIONS	14
SOLUTIONS	14
VIDEO ROOM	14
SAMPLES	14
NO-CHARGE SUPPORT	14
CROSS-PLATFORM LICENSING	15
MULTI-DISPLAY SUPPORT	15
WINDOWS 64-BIT SUPPORT	15
ABOUT CS ODESSA	15
FREQUENTLY ASKED QUESTIONS	16
TABLE OF FIGURES SUPPORT	17
KEYBOARD SHORTCUTS	18

GETTING STARTED WITH CONCEPTDRAW PROJECT


Thank you for your interest in ConceptDraw® PROJECT v10! To begin with, let's install the program on your system. To install the product, and activate your trial license:

1. Navigate your web browser to www.ConceptDraw.com and click **Sign In**.
2. Fill in the form with your information, and then click Submit.
3. Check your email for the message from support@ConceptDraw.com that contains your confirmation link. (Spam filters may catch this message. If you don't see the email within a few minutes, check your "Junk" or "Spam" folders.)
4. Follow the link to confirm your account, and then click **Download product**.
5. Once the download is complete, run the installation file.
6. Follow all the on-screen instructions to complete the installation.
7. Once the installation is completed, ConceptDraw STORE runs automatically. The trial licenses listed in your account will be delivered to your computer automatically through your internet connection.
8. Congratulations! Your FREE 21-day trial of ConceptDraw PROJECT has begun.

CREATING PROJECTS

The default view for a new project is the Gantt Chart.

The left pane of this chart displays a list of Tasks. The right pane displays a calendar and timeline of those tasks.

To begin managing a new project, you will need to define the individual Tasks that must be completed to deliver it. Click the Add button  on the Home toolbar to create a new Task.

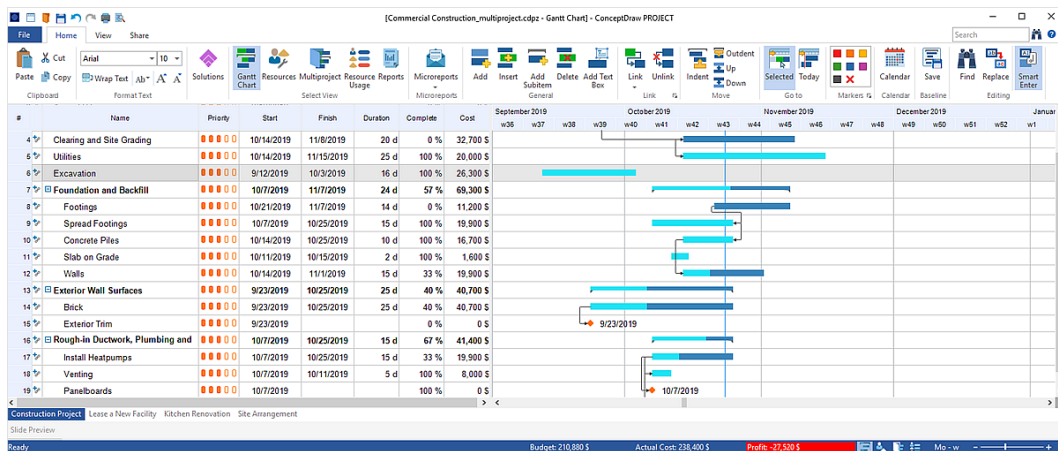




Figure 1: Gantt Chart

Then name the Task, and assign its duration. You can do so by double-clicking on the fields in the left pane of the Gantt chart, and then typing on your keyboard.

Tasks are usually grouped into larger Phases. Use the Indent button  on the Home toolbar to subordinate a Task, thereby making the dominant item into a Phase. You cannot edit a Phase's duration. The duration of a Phase is determined by the duration of all the Tasks within it.

Often, one Task must be completed before another can begin. To establish a relationship between Tasks, select two or more Tasks on the Gantt chart, and then click the Link

button  on the Home toolbar. Editing the duration of linked Tasks will automatically adjust their position on the Gantt chart.

ASSIGNING RESOURCES

Once you have outlined the Tasks that comprise your project, the next step is to assign Resources to those Tasks.

Select a Task on the Gantt chart, and then open the Assign Resources panel in the Panels list on the View tab. Click the check box next to a Resource to assign it to the selected Task.

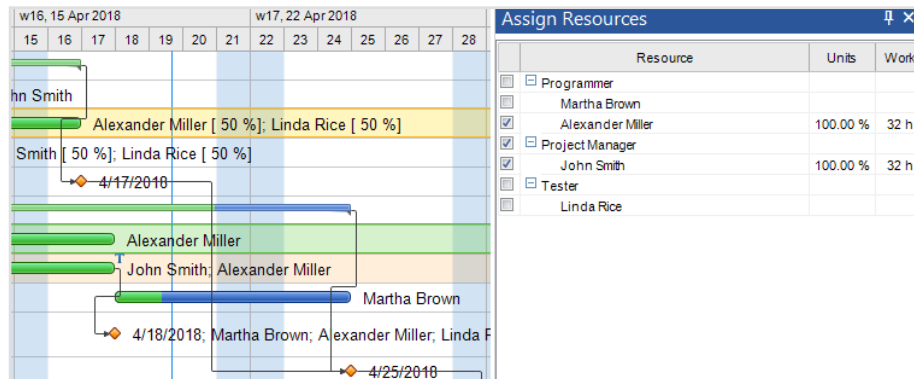


Figure 2: Assign Resources panel

There are five kinds of Resources: Work,; Material; Cost; Equipment and Company. Work resources are those with a cost over time. Other resource types have a fixed cost per unit.

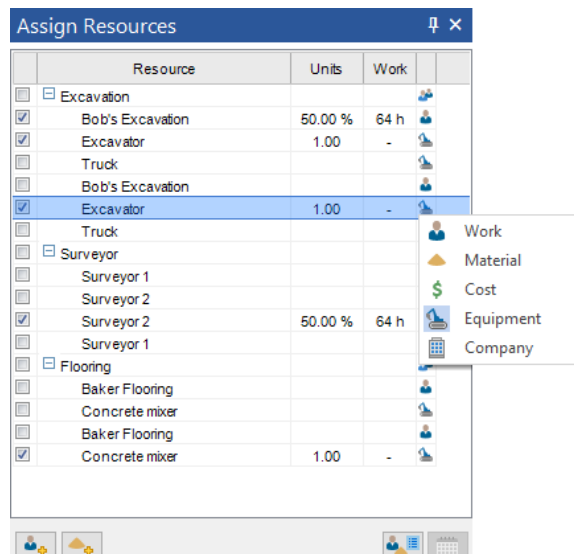


Figure 3: List of Resource Types

Getting Started with ConceptDraw PROJECT v10 for Windows

For detailed information on your project's Resources, click the Resources button on the Home toolbar to view the Resource Sheet

#	Name	E-Mail	Type	Cost	Group	Calendar	Notes
1	James Smith	j.smith@company.com	Work	\$25h	Engineering		
2	John Brown	j.brown@company.com	Equipment	\$20	Manufacturing		
3	Mary Williams	m.williams@company.com	Work	\$30h	Marketing		
4	Robert Moore	r.moore@company.com	Work	\$25h	Sales		
5	Patricia Jones	p.jones@company.com	Material	\$25	Product Support		
6	Linda Davis	l.davis@company.com	Work	\$20h	Local Service		
7	Richard Miller	r.miller@company.com	Work	\$35h	Product Manager		
8	Thomas Wilson	t.wilson@company.com	Work	\$25h	Engineering		
9	Barbara Taylor	b.taylor@company.com	Work	\$25h	Engineering		
10	Andrew Anderson	a.anderson@company.com	Work	\$25h	Engineering		
11	Susan White	s.white@company.com	Work	\$30h	Marketing		
12	Karen Martin	k.martin@company.com	Work	\$30h	Marketing		
13	William Jones	w.jones@company.com	Work	\$25h	Sales		
14	Michael Smith	m.smith@company.com	Work	\$22h	Sales		
15	David Harris	d.harris@company.com	Work	\$23h	Product Support		
16	Nancy Garcia	n.garcia@company.com	Work	\$20h	Product Support		
17	Laura Rodriguez	l.rodriguez@company.com	Work	\$20h	Local Service		
18	Helen Clark	h.clark@company.com	Work	\$22h	Local Service		

Figure 4: Resource Sheet

Once you have detailed and assigned your Resources, the Resource Usage View will tell you at a glance if your Work Resources (i.e., employees) are over taxed. This dashboard displays the amount of work assigned each day to each Work Resource. Overworked Resources appear as red bars on the timeline. Click the + next to each Resource to view the Tasks it is assigned to.

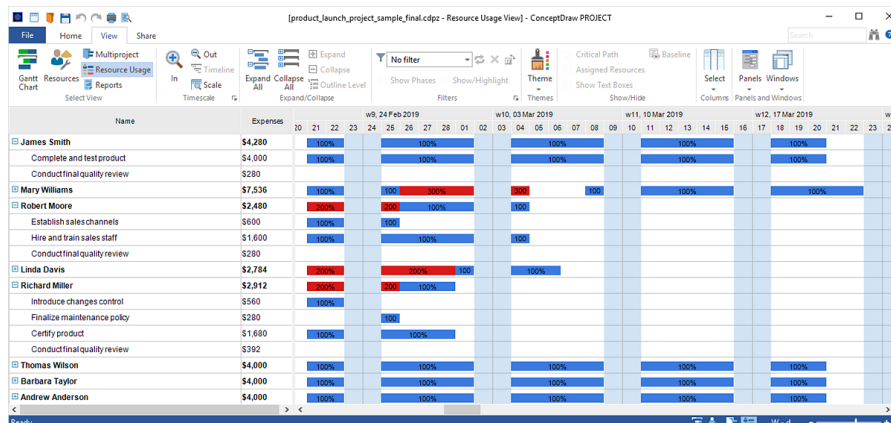
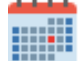


Figure 5: Resource Usage View

SETTING THE CALENDAR

By default, ConceptDraw PROJECT assumes working hours are between 8am and 5pm, Monday through Friday. However, creating exceptions to this policy is easy.

Click Calendar button  on the Home toolbar. This will open the Document Properties window.

From the Calendar tab of this window, you can designate non-default working hours for specific days, as well as non-working days.

You can also select a specific Work Resource from the drop down menu above the calendar to change working hours and days for that resource only.

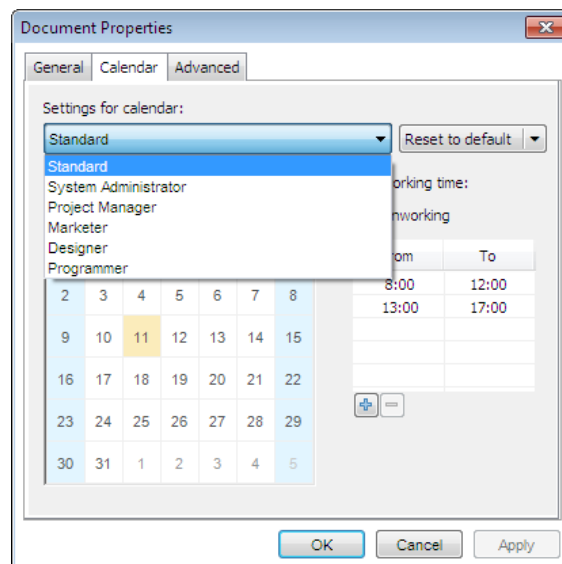


Figure 6: Calendar

ADDING DETAILS

HYPERNOTE

To make referencing information outside the project file effortless, you can add Hyperlinks and text Notes to a Task, Phase, Resource or Project.

Select the item in question, and then select the Hypernote panel in the Panels list on the View tab.

The buttons at the bottom of the Hypernote pane allow you to quickly link to a website, a file or folder on your computer, an email address, or other object within your project file.

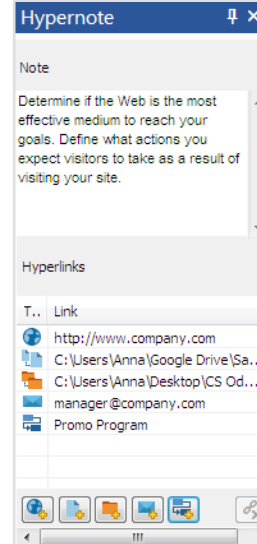


Figure 7: Hypernote panel

MILESTONE

You can set a Milestone in your Gantt chart by selecting a Task, and then clicking the "Milestone" checkbox in the Task pane. Milestones do not have duration, but they can be marked Completed by clicking the "Complete" checkbox.

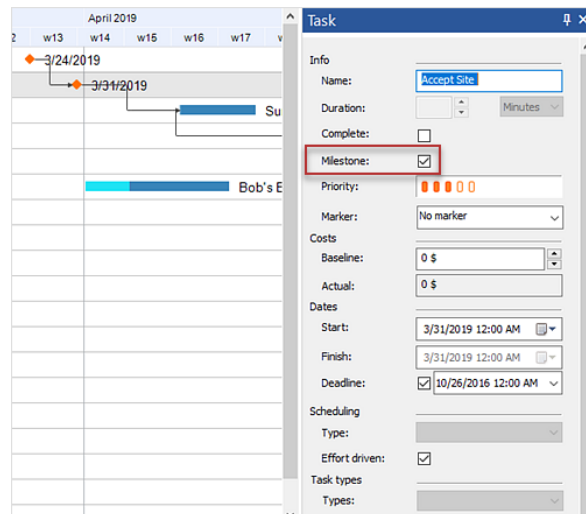


Figure 8: Milestone on the Gantt chart

MANAGING MULTIPLE PROJECTS

ConceptDraw PROJECT allows you to manage multiple Projects in a single file.

Click Multiproject on the Home toolbar.

Multiproject view is similar to the Gantt chart, but the timeline is on a larger scale.

Most of the controls on the toolbar work similarly to the Gantt chart, such as Add (to create new Projects) and Link (to create relationships between Projects).

However, you cannot edit the duration of a Project in Multiproject View.

You must return to the Gantt chart and edit the timeline of the individual Project.

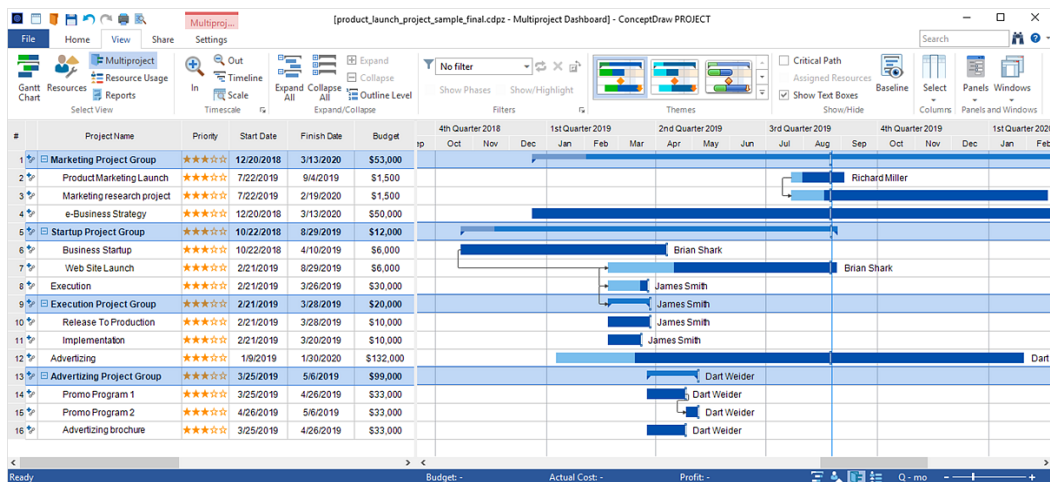

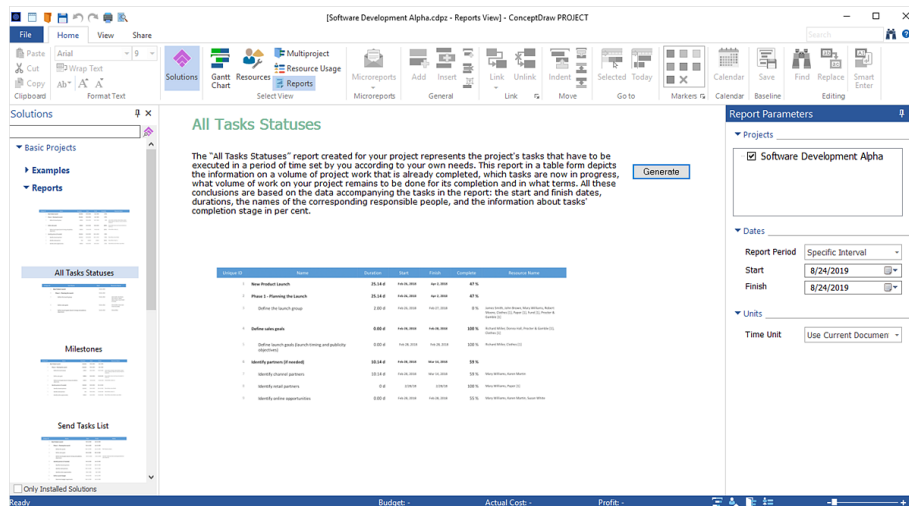


Figure 9: Multiproject View

PROJECT REPORTS

ConceptDraw PROJECT offers a variety of ways to report the status of your project.

These can be viewed by clicking the Solutions button  on Home toolbar . This will open a side panel containing a vast array of choices for reporting on your project in spreadsheet (MS Excel®) format.



The screenshot displays the ConceptDraw PROJECT interface with the 'All Tasks Statuses' report open. The report is presented in a spreadsheet format with columns for Task ID, Name, Duration, Start, Finish, Complete, and Resource Name. The 'All Tasks Statuses' report is selected in the 'Reports' section of the 'Solutions' panel. The 'Report Parameters' panel on the right shows the project 'Software Development Alpha' selected, with a report period from 8/24/2019 to 8/24/2019. The 'Generate' button is visible next to the report description.


Task ID	Name	Duration	Start	Finish	Complete	Resource Name
1	New Product Launch	25.000	10/10/2019	10/10/2019	41%	
1	Phase 1: Planning the Launch	25.000	10/10/2019	10/10/2019	41%	
1	Identify the market target	2.000	10/10/2019	10/10/2019	0%	John Smith, Jane Smith, Mike Williams, Susan Brown, Robert J. Taylor, G. Taylor & Associates
1	Define sales goals	1.000	10/10/2019	10/10/2019	100%	Robert J. Taylor, G. Taylor & Associates
1	Identify target groups (demographics and psychographics)	1.000	10/10/2019	10/10/2019	100%	Robert J. Taylor, G. Taylor & Associates
1	Identify partners (if needed)	10.000	10/10/2019	10/10/2019	10%	
1	Identify channel partners	10.000	10/10/2019	10/10/2019	10%	Mike Williams, John Smith
1	Identify retail partners	0.0	10/10/2019	10/10/2019	100%	Mike Williams, John Smith
1	Identify online opportunities	0.000	10/10/2019	10/10/2019	10%	Mike Williams, John Smith, Susan Brown


Figure 10: Project Report in Spreadsheet (MS Excel®) Format.

PRESENTING YOUR PROJECT

On the Share tab, you have three buttons for creating slides of specific views within your project.

Scroll to an area of the Gantt Chart or Resources Sheet, and use the Zoom controls on the View toolbar to focus on the area you wish to capture, and then click

Capture slide  .

Expand the Slide Preview tab at the bottom of the window by clicking on it and you will see the slides you have created thus far. You can save your slides as Portable Network Graphics files by clicking the PNG button  .

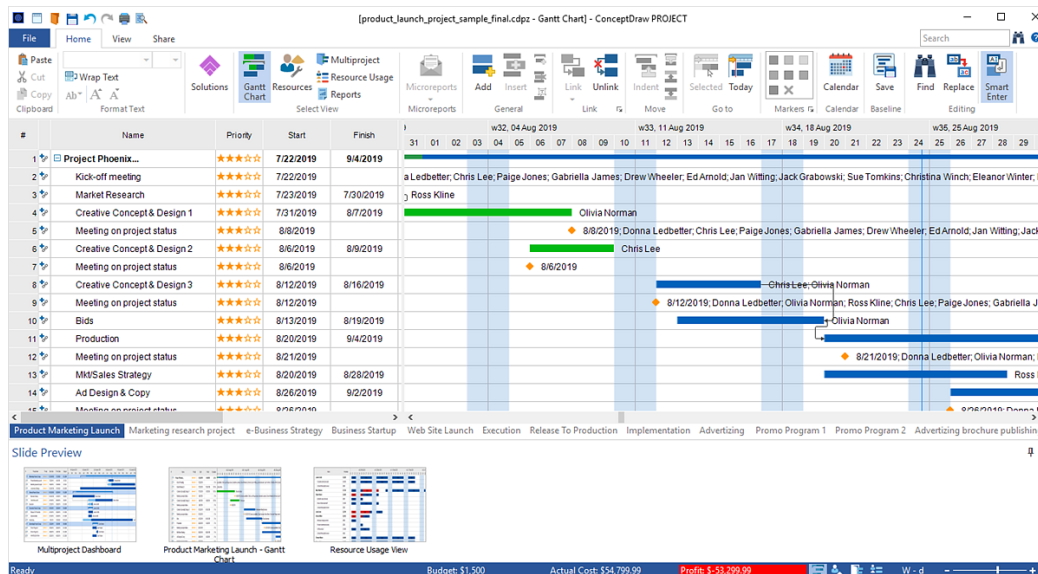



Figure 11: Project Slide Preview

INTEGRATING WITH OTHER CONCEPTDRAW OFFICE APPLICATIONS

Using all three programs in the ConceptDraw OFFICE suite in this way unlocks their true potential for increasing your productivity and facilitating your workflow.

CONCEPTDRAW DIAGRAM

If you have ConceptDraw DIAGRAM installed, the item Dashboards in the list of available reports on the Solutions panel can be used to generate drawings for tracking the status of your project at a glance.

Also, the DIAGRAM button  on the Share tab can be used to draw a variety of diagrams, such as PERT charts and WBS (Work Breakdown Structure), suitable for printing and display.

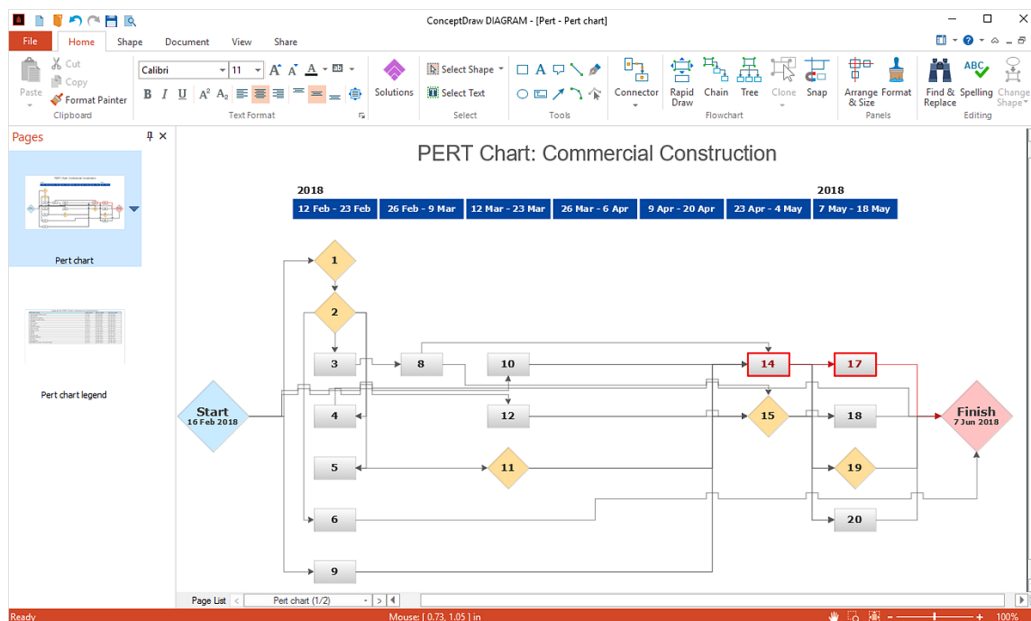



Figure 12: PERT Diagram

CONCEPTDRAW MINDMAP

If you also have ConceptDraw MINDMAP installed, you can instantly create a mind map

from your Gantt chart using the Open in MINDMAP button  on the Share tab. This allows you to take full advantage of ConceptDraw MINDMAP's visual, non-linear organization capabilities for reorganizing your project, and add content via Brainstorming mode.

You can then send the mind map back to PROJECT to use its more detailed resource and task management capabilities.

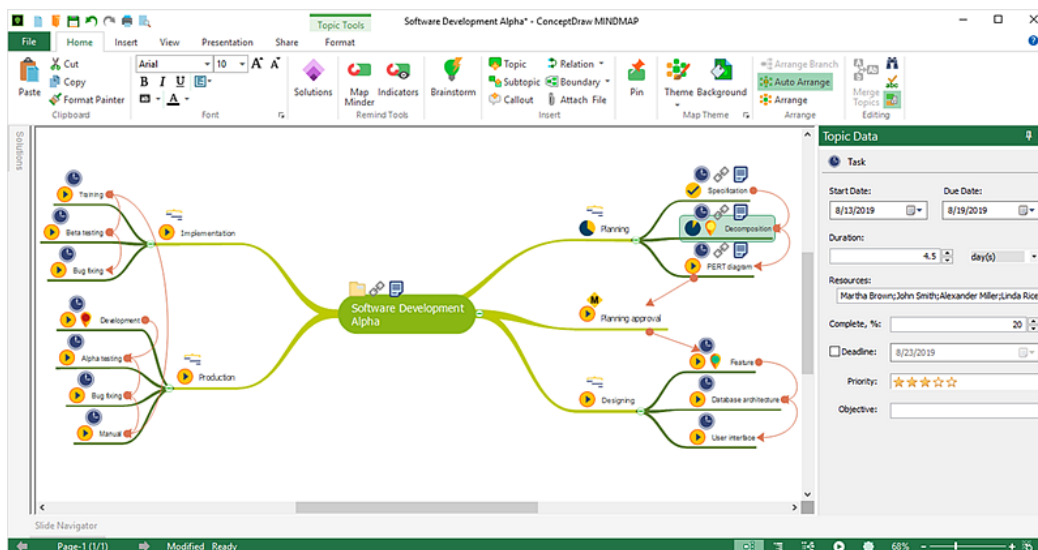


Figure 13: Project Mind Map

WORKING WITH OTHER APPLICATIONS

ConceptDraw PROJECT has the ability to export to a number of usable file formats, giving ConceptDraw users powerful flexibility in working with others. Expand the File tab to view all of ConceptDraw PROJECT's import and export options.

Exporting to MS Project® is one of the best ways to share your project. ConceptDraw PROJECT v10 is thoroughly compatible with MS Project's, and can import from native .mpp format and export to MS Project XML files to make working across operating platforms not only possible, but effortless. ConceptDraw PROJECT v10 is also import/export compatible with Mindjet® MindManager® files.

SOLUTIONS

ConceptDraw Solutions is an ever-growing collection of business-specific solutions and product add-ons that are available to add continued value after the initial purchase of a ConceptDraw product. For more information, visit <https://www.conceptdraw.com/solution-park>

VIDEO ROOM

CS Odessa offers a series of instructional videos for ConceptDraw Products. Users of all proficiency levels will find here new insights into the product's functionality, as well as helpful tips to expedite their workflow. <https://www.conceptdraw.com/video/>

SAMPLES

CS Odessa offers an online collection of professional samples designed to help ConceptDraw users achieve their best. ConceptDraw Samples shows many of the varieties of tasks and possibilities that the ConceptDraw Product Line can achieve. <https://www.conceptdraw.com/samples/about-samples>

NO-CHARGE SUPPORT

CS Odessa offers no-charge support for all licensed and trial users of ConceptDraw Products. ConceptDraw Maintenance Assurance P1 is also available to stay current with major updates to ConceptDraw Products.

CROSS-PLATFORM LICENSING

CS Odessa is one of the only companies in the world that offers a cross-platform license. This means that if you want to install your product on a Mac and a PC for your use, you can do so with our license. Most companies require that you purchase a separate license for each platform.

MULTI-DISPLAY SUPPORT

ConceptDraw PROJECT supports working across multiple computer screens. You can open separate mind maps on different screens and copy-and-paste from one to the other.

WINDOWS 64-BIT SUPPORT

All ConceptDraw applications are compatible with Windows 7 SP1, 8.1, 10 (64-bit certified).

ABOUT CS ODESSA

Founded in 1993, Computer Systems Odessa supplies cross-platform productivity tools and graphics technologies to professional and corporate users around the world.

From their headquarter in Odessa, Ukraine, CS Odessa sells internationally in over 150 countries, both directly and through resellers.

The ConceptDraw Productivity Line has won numerous awards, and is used by hundreds of thousands all over the world. For more information, visit <https://www.conceptdraw.com>

FREQUENTLY ASKED QUESTIONS

What is the difference between Technical Support and Maintenance Assurance P1?

Technical support is a no charge item provided to our customers and individuals trialing or products. Our Tech Support team is there to help you with installing, product activation, and product issues. Technical support is available by submitting a ticket via our web site, and by phone and email. Minor product upgrades are at no additional cost.

When purchased at the same time of you ConceptDraw Product purchase, Maintenance Assurance P1 provides you the next major release of your product at no additional cost. When the next major upgrade of the product becomes available you will be notified of its availability for download and installation.

Why is ConceptDraw STORE part of the product I purchased?

When you activate a purchased license for your product, that authorization is stored in the cloud, and then synchronized with your desktop product(s) using ConceptDraw STORE. We do this so if the unthinkable occurs and you have a catastrophic event with your computer such as a hard disk failure, you can log into your account on ConceptDraw.com and retrieve your license, saving you time and headaches.

The ConceptDraw STORE also manages the versioning of all of your products, and give you access to all of the additional business solutions found in the ConceptDraw Solution Park.

I am with a large organization; do you support other methods of installation besides the one I experienced from my trial?

We have additional methods of delivering product to the users in your organization. Please contact our sales or support team for details.

Do you have pricing for academia and non-profits?

Yes, we have aggressive pricing for students, educators and employees of certified nonprofit organizations. Contact our sales team for pricing details.

TABLE OF FIGURES SUPPORT

Figure 1: Gantt Chart.....	4
Figure 2: Assign Resources tab.....	5
Figure 3: List of Resource Types.....	5
Figure 4: Resource Sheet.....	6
Figure 5: Resource Usage View.....	6
Figure 6: Calendar.....	7
Figure 7: Hypernote panel.....	8
Figure 8: Milestone on the Gantt chart.....	8
Figure 9: Multiproject View.....	9
Figure 10: Project Report in spreadsheet (MS Excel®) format.....	10
Figure 11: Project Slide Preview.....	11
Figure 12: Project Dashboard.....	12
Figure 13: Project Mind Map.....	13

KEYBOARD SHORTCUTS

Following is an abbreviated list of the most commonly used keyboard shortcuts. See the in-program Help file for the comprehensive list.

Keystroke	Operation
Ctrl + N	Create a New Document
Ctrl + O	Open a Document
Ctrl + S	Save the active document
Ctrl + Shift + S	Save the active document under a new file name
Ctrl + P	Print Preview
Ctrl + F4	Close active document
Ctrl + Right	Indent task
Ctrl + Left	Outdent task
Ctrl + Down	Move item to the next position (one line down)
Ctrl + Up	Move item to the previous position (one line up)
Ctrl + L	Link selected tasks
Ctrl + Shift + L	Unlink selected tasks
Ctrl + Alt + G	Gantt Chart View
Ctrl + Alt + R	Resource List View
Ctrl + Alt + J	Projects Dashboard
Ctrl + Alt + U	Move to Resource Usage View
Ctrl + R	Call Reports dialog
Ctrl + Z	Undo the last operation
Ctrl + X	Cut the selection to the Document
Ctrl + C	Copy the selection to the Document
Ctrl + V	Paste the content from the Document
Ctrl + A	Select all the tasks on document

CS Odessa

Technical Support/Sales Phone Numbers

US/Canada/Mexico:

+1 (877) 441-1150 x3

Rest of the World:

+44 (203) 514-7040

support@conceptdraw.com

© 2019, CS Odessa corp.